

# NORTHERN TOURIST GUIDE

Hotel Apartamento Solverde



**SOLVERDE**  
CASINOS · HOTÉIS



# HOTEL APARTAMENTO SOLVERDE



Rua 21 77  
4500-267 Espinho



+351 227 338 000



hotelapartamento@solverde.pt

# CULTURE HERITAGE

part I

## ARTE-XÁVEGA (ESPINHO MUNICIPAL MUSEUM)



Here you can see a range of objects used in the daily life of this centuries-old art of artisanal fishing, photographs of the work and its people, and a whole series of more technical and peculiar information about the 'Art'.

Established in 1974, it stands out for its privileged location on the Atlantic coast. It offers a wide range of casino games, such as roulette, blackjack, poker and slots. It is also known for its cultural events, poker tournaments, shows and diverse gastronomic offer.

## ESPINHO CASINO



## ESPINHO MULTIMEDIA CENTRE/PLANETARIUM



A cultural and educational complex with a planetarium, auditoriums, exhibition galleries and a café-concert. The centre also organises cultural, educational and scientific events.

## NAVE POLIVALENTE DE ESPINHO

A modern, multifunctional space designed to host a variety of events, such as fairs, exhibitions, sports and cultural events.



## WEEKLY FAIR



It takes place every Monday and is one of the largest and oldest open-air fairs in the country. Throughout the various streets and avenues, visitors can find clothes, shoes, accessories and also fruit, vegetables, cheeses, meat, flowers and handicrafts.

# CULTURE HERITAGE

## part II

### PELUDOS FAIR



Currently known as the "Flea Market and Antiques Fair", the "Peludos Fair" has been a reference point for the Municipality of Espinho since 1987. Visitors can find a veritable showcase of uniquely beautiful antiques and unique beauty and relics that invite you to travel back in time. Full of tradition, memories and nostalgia, it enchants with genuine products and treasures full of history.

### COSTA VERDE AERoclub EQUESTRIAN SECTION



Located in Espinho, the club is dedicated to promoting aeronautical and sporting activities, with its prestigious equestrian section standing out. It offers riding lessons and organises competitions and equestrian events, in a welcoming atmosphere and with qualified professionals.

### ESPINHO TENNIS COMPLEX



Sports facility with a modern and well-equipped infrastructure, including multiple tennis courts. They are used for training programmes or for tournaments, local and international competitions.

### BALNEÁRIO MARINHO DE ESPINHO



Also known as Piscina Solário Atlântico, it has large outdoor pools, including a wave pool and a children's pool, as well as sunbathing areas. It offers a true leisure and relaxation experience with breathtaking views of the Atlantic.

### SENHOR DA PEDRA CHAPEL



Built on a cliff by the sea on Miramar beach in Vila Nova de Gaia, it is a religious sanctuary known for its unique baroque architecture and mystical aura.

### SÃO BENTO STATION



Recognised for its impressive tile panels depicting historical scenes of Portugal, it is the destination of one of the most breathtaking train journeys: the seaside route from Granja to Oporto.



# BEACH NATURE

part I

## PARAMOS LAGOON



Located in Espinho, it is a natural refuge that highlights the beauty and biodiversity of the region. With its serene waters and surrounded by native vegetation, it is the ideal place to watch migratory and resident birds.

## AGUDA BEACH



With its strong waves, it is popular with surfers and offers good conditions for underwater fishing, due to the many specimens that shelter on its rocky bottoms.

## GRANJA BEACH



Natural beauty, long stretches of sand, historic charm and unrivalled tranquillity. The atmosphere is calm and relaxing, making it a popular choice for families during the summer.

## BAÍA BEACH



With a wide seafront promenade close to the centre of Espinho, it is the city's most popular beach. Several World Surfing League championships are held here.

## MADALENA BEACH



It offers good conditions for surfing and beach volleyball and is even the venue for various national and international competitions.

## ESPINHO CITY PARK



Green space with large walking areas, picnic areas, gardens and playgrounds.



# BEACH NATURE

## part II

### LAVANDEIRA PARK



Located in Oliveira do Douro, it offers various leisure activities, including hiking trails, picnic areas and themed gardens.

### ELA Estação Litoral da Aguda



A 15-kilometre cycle and pedestrian path that stretches along the Portuguese coast, offering breathtaking views of the Atlantic Ocean and coastal landscapes. Vila Nova de Gaia's wooden walkway stands out, connecting the beaches of Lavadores to Espinho.

### COASTAL ECOVIA



Scientific research unit dedicated to the study of marine and coastal ecosystems and research into biodiversity, conservation and sustainable management of coastal areas.

### SANTO INÁCIO ZOO



Located in the city of Vila Nova de Gaia, it is a park with large green areas, centenary trees and leisure spaces, popular for picnics, walks and outdoor events.

### MORRO GARDEN



Located just 10 minutes from the centre of Oporto, it is the largest and greenest zoo in the country. It is committed to conservation and environmental education, providing an enriching environment where visitors can learn about biodiversity and the importance of preserving global fauna.

### PAIVA WALKWAYS



A tourist attraction located in the municipality of Arouca, it consists of a walking route of around 8 kilometres along the Paiva River. It offers an enchanting view of the natural landscape, where rock formations, waterfalls and lush vegetation stand out.



# EVENTS FESTIVITIES



## SÃO SILVESTRE DE ESPINHO

It's one of the most eagerly awaited events in the sporting calendar, bringing together enthusiasts from all over the country and beyond in January. A running event with races of various distances and levels, including 10km and 21km races, as well as children's races and walks.



## ESPINHO INTERNATIONAL PUPPET FESTIVAL

Renowned cultural event that takes place every year in March and is dedicated to the art of puppetry and theatre. The programme includes performances, workshops and exhibitions with artists from all over the world.



## WORLD BEACH VOLLEYBALL CIRCUIT

It is one of the main beach volleyball championships organised by the International Volleyball Federation (FIVB). Baía beach, in Espinho, is the scenario for one of the stages of the competition.



## AMB VOLLEYBALL CUP

Held in Espinho, it is one of the largest and most prestigious international volleyball tournaments for junior age groups.



## FEST - NEW DIRECTORS' FESTIVAL

The New Directors' Festival is a unique celebration of new cinema and new filmmakers, which takes place every year at the beginning of summer in Espinho.



## SÃO JOÃO FESTIVITIES

Oporto's most revered saint puts the whole city into a festive mood on the night of 23 June. Music, dancing, snacks and fireworks mark the São João festivities.



## SÃO PEDRO FESTIVITIES

It takes place on 29 June in Espinho and has become one of the county's major festivals. The Desfile das Rusgas a S. Pedro and the majestic Procession are the highlights. Lots of music and party at this event dedicated to the sea.



## INTERNATIONAL MEETING OF LIVING STATUES

It is one of the highlights of street entertainment in Espinho. The "statue men" surprise the public in an event that usually takes place in June.



## ESPINHO INTERNATIONAL MUSIC FESTIVAL

It hosts some of the world's best performers in their fields. It usually takes place in June and July.



## VIRABANHOS

It recalls the golden age of Espinho, when villains and noblemen used to go to the beach on prescription. The recreation of a beach at the beginning of the 20th century involves around a hundred extras, where you can get to know and enjoy the customs of the people who enjoyed beach bathing in Espinho and a tourist resort full of glamour for the time. It usually takes place on a weekend in July.



## NOSSA SENHORA DO MAR FESTIVITIES

The great festivity in honour of Patron Saint of Fishermen takes place in the Bairro Piscatório, in Silvalde, on the first weekend of August. The programme is full of entertainment and music.



## NOSSA SENHORA DA AJUDA FESTIVITIES

It takes place on the third Sunday in September. The worship of Nossa Senhora da Ajuda, with a solemn mass and procession, is followed by a profane party with an arraial, culminating in a large pyromusical show. On the last day, the Fair closes with the traditional "Onion fair", where onions are displayed in braided cords, an ancient practice.

## CINANIMA



The Espinho International Animated Film Festival takes place in the second week of November. It has a long and valuable history in the context of world animation cinema, being the pioneering festival in Portugal. It is the oldest in the country and the third oldest in the world.







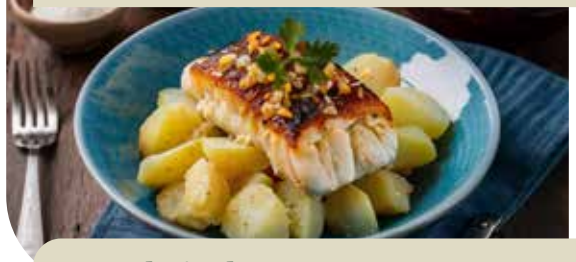
# LOCAL GASTRONOMY

-NOT TO BE MISSED -

Seafood Rice



Codfish



Caldeirada de Espinho



Espinho's Shrimp



Francesinha



Fogaças de Santa Maria da Feira



Grilled Fresh Fish



Fish Soup



Tripas à moda do Porto







# RESTAURANTS

-NOT TO BE MISSED -

## HOTEL SOLVERDE SPA & WELLNESS CENTER

O Jardim

Coffee Shop (July and August)

+351 227 338 030

### Aquário Marisqueira de Espinho

+351 227 321 000

### Churrascaria Graciosa

+351 227 313 615

### Baccará Casino Espinho

+351 227 335 500

### O Golfinho

+351 227 344 294

### Barraquinha Nova

+351 224 921 034

### Otöshi

+351 966 469 988

### Cabana Restaurante Marisqueira

+351 914 017 007

### Pizzaria Ciao Bella

+351 227 627 273

### Casa Meireles

+351 227 311 140

### Zizi

+351 227 620 728



# SPORT

## Golf

Oporto Golf Club



## Surf

Surf Guide & The Spot Surf School



## Football

Aguda Park



## Tennis

Hotel Solverde Spa & Wellness Center



## Horse Riding

Serzedo Equestrian Centre  
International Equestrian Association – School Horses



## Water and Nautical Sports

Douro Marina & Crestuma Nautical Club  
[ Douro Sailing, Douro Academy, BBDouro ]



[www.gruposolverde.pt/hoteis](http://www.gruposolverde.pt/hoteis)



NORTHERN TOURIST GUIDE



**SOLVERDE**  
CASINOS · HOTÉIS