



Dear Guest,

The Hotel Solverde Spa & Wellness Center thanks you for your preference.

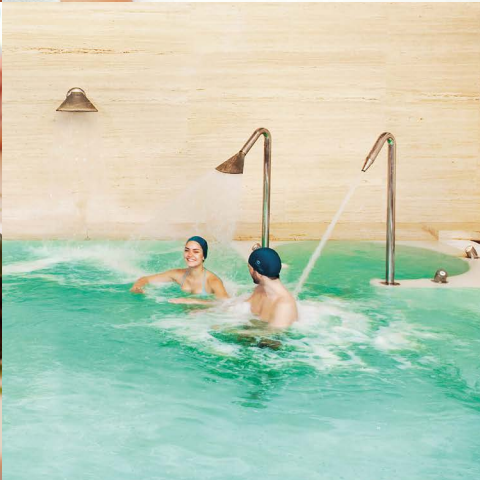
We have at your disposal a professional team ready to provide you the...
“Best Moments”.

In order to make your stay easier, we prepared this short guide to inform you of
the services available in our Hotel as well as some suggestions for your free time.

We are available for any further information and wish you have
an enjoyable stay.

The Management





We expect that this document will help you to learn more about our unity. Please keep it in good condition. The following guests will thank you.



INDEX

05
GENERAL DESCRIPTION

07
SERVICES from A to Z

19
RESTAURANTS / BARS / ROOM SERVICE

21
SPA & WELLNESS CENTER

25
CONFERENCE ROOMS

29
OTHER UNITS OF SOLVERDE GROUP



GENERAL DESCRIPTION

LOCATION

Avenida da Liberdade, 212
 4410-154 S. Félix da Marinha
 Tel: +351 227 338 030 | Fax: +351 227 313 200
 E-mail: hotelsolverde@solverde.pt | Site: www.gruposolverde.pt

The Hotel Solverde Spa & Wellness Center is located in Praia da Granja, just 2.5 km from Espinho, 17 km from Porto, 30 km from the International Airport of Porto and 290 km from Lisbon.

CHARACTERISTICS

- 5 Stars
- 8 Floors
- 4 Lifts
- Air conditioning
- Electric current - 220V
- Free Wi-Fi
- Safes
- Shops
- Car Park (220 vehicles)
- Heliport
- Landscaped area (20.000 m²)
- Electric car charging point (outdoor)

- 169 rooms including 111 with balcony with sea view.
- 90% of the hotel's rooms are communicating.
- 5 luxury suites with whirlpool, balcony with sea view.
- Indoor and outdoor pools with heated seawater (seasonal at the outdoor pool).
- Gym equipped with cardio fitness machines, thermal area (sauna, Turkish bath, *laconium*, shower sensations and ice cabin) and SPA with 8 treatment rooms ranging from massages and beauty treatments to physiotherapy, jacuzzi and chromotherapy.
- 2 tennis courts, mini-golf, beach volleyball field, turf field for football practice, one padel court.
- 17 conference rooms (including congress area, with total area of 700 m², all with air conditioning and natural daylight).

“O Jardim” Restaurant (160 seats) – ground floor

“Coffee Shop” Restaurant (120 seats) – level -1

“Ponto de Encontro” and “Esplanada” Bar (92 seats) – ground floor

“Salão de Jogos” Bar (50 seats) – level -1

Spa & Wellness Center – level -1



SERVICES FROM A | Z

If you need to contact Reception please dial "4, 7 or 9".

A | B

AIR CONDITIONING | The control is on the wall at the entrance of the room.

ANIMALS | Not allowed, except guide dogs.

BABYSITTING | Service available by request 24 hours in advance subject to availability. The service will be charged directly by the babysitter. Ask at Reception please.

BEAUTY SALON | Service available in the SPA in level -1. For more information and bookings dial "552" from 9:00 a.m. to 2:30 p.m. and 4:00 p.m. to 9:30 p.m., or contact Reception please.

BREAKFAST | Buffet breakfast served at the "O Jardim" Restaurant from 7:00 a.m. to 10:30 a.m. If you want to have it in the room, you can put the menu for that effect on the outside of the room door until 5:00 a.m. or contact Reception. This service is available until 11:00 a.m.

BICYCLES | Free, subject to availability. Ask at Reception please.

BOOKINGS | 24/7 booking service for any of our Hotels or Casinos. Please contact Reception.



SERVICES FROM A | Z

C

CAR RENTAL | Service available by reservation 24 hours in advance at Reception.

CHECK-IN / CHECK-OUT | Check-in is only available from 3:00 p.m. and check-out must be made until 12:00 p.m.

CHILDREN'S ROOM | Available for children over 3 years in level -1 from 9:30 a.m. to 8:30 p.m. The room is not supervised, except in July and August.

CLEANING THE ROOM | Daily service performed between 9:00 a.m. and 5:00 p.m.

COFFEE SHOP | Situated on level -1. Open in the summer months (July and August) between 1:00 p.m. and 6:00 p.m.

COMFORT AMENITIES | Shoe shine kit, shoehorn and sewing kit to be requested at Reception.

COMPLAINTS BOOK | There is a Complaints Book at the Hotel's Reception desk.

CONGRESSES / MEETINGS | We have 17 meeting rooms on the ground and 1st floor with areas of 19 m² up to 400 m². All the rooms have natural light and air conditioning. Room hire and audiovisual equipment is available according to budget. Ask at Reception please.

CORRESPONDENCE / PARCELS / MAIL | Please contact Reception.

COTS | Upon request and subject to availability, we put in the room. Ask at Reception please.

CREDIT CARDS | We accept the following credit cards: ATM CARD, Diner's Club, Unibanco, Visa, Master Card, Tarjeta 2000, American Express, Eurocard and others.



SOLVERDE
CASINOS & RESORTS

SERVICES FROM A | Z

D | E | F | G | H | I

DOCTOR / NURSE | For medical assistance or medication please contact Reception. The service will be charged by the doctor / nurse directly.

ELECTRIC CURRENT | The electric current is 220V. The bathroom sockets only allow the use of shavers.

EXTRA BEDS | Upon request and subject to availability, we put in the room. Ask at Reception please.

FIRE | In case of fire, please follow the instructions that are posted on the room's door and please warn Reception.

FLOWERS | Service available Monday to Saturday (except public holidays). To order, request the service at Reception. This service must be requested 24 hours in advance.

GOLF | For information on golf courses in the region please contact Reception.

HELIPORT | For more information please contact Reception.

INTERNET | Free Wi-Fi.

IRONING | For more information see the leaflet in the room.



SERVICES FROM A | Z

L | M | N | P

LAUNDRY | Please check and fill the laundry list that is in the drawer of the dressing table.

LINEN CHANGE | Done daily. If you need any additional change please contact Reception.

LOST AND FOUND | Please inform Reception.

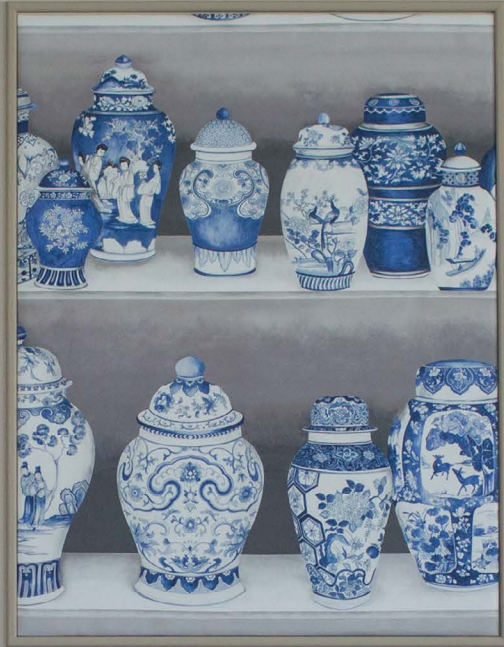
LUGGAGE | Luggage can be stored next to Reception in a proper place.

MINIBAR | Available in all rooms. Price list is in the room. Stock is checked and refilled daily. On the day of departure, please inform Reception of last items consumed.

NEWSPAPERS / MAGAZINES | Service available every day in level 0.

PARKING | The Hotel has outdoor parking and a garage. The garage is located on level -1 and the number of parking places is limited. To obtain access to the garage you should enquire at Reception. We also have outdoor parking for coaches.

PHARMACY | You may obtain information about the pharmacy at Reception.



SERVICES FROM A | Z

R | S

RECEPTION | Open 24 hours a day, all year round.

RELIGIOUS SERVICE | For schedule of masses in Espinho request information at Reception.

RESTAURANTS | “O Jardim” situated on the ground floor, with panoramic views over the garden and the sea:

Buffet breakfast: 7:00 a.m. – 10:30 a.m.

Lunch: 12:30 p.m. – 2:30 p.m.

Dinner: 7:30 p.m. – 10:30 p.m.

In the summer months (July and August), the “O Jardim” Restaurant is closed at lunchtime. In its place, the “Coffee Shop” Restaurant, situated in level -1, will be open from 1:00 p.m. to 3:00 p.m.

SAFES | There are individual safes at clients disposal in the room. If you wish, you can also use the central safe deposit service at Reception.

“SALÃO DE JOGOS” BAR | Situated on level -1

SEWING | Service available from 08:00 a.m. to 4:00 p.m. Please contact Reception.

SHOWS AND ENTERTAINMENT | The Casino Espinho, just 5 min. by car, has the best musical shows every Friday and Saturday. For information and bookings contact Reception please.

SIGHTSEEING TOURS | Reception will provide all the support on Sightseeing Tours in the region.

SPORT | We have 2 swimming pools (indoor and outdoor), 2 tennis courts, 1 multi-sport court, 1 turf field for football practice (60 m x 30 m), 1 beach volleyball court and 1 gym with cardio fitness machines, one padel court.

STATIONERY | In the room, there is a pen, a notepad, paper sheets and envelopes. If you want more or other services such as sending a fax or printing documents please contact Reception.

SWIMMING POOLS | In level -1. Indoor and outdoor pools with heated seawater (seasonal at the outdoor pool).



SERVICES FROM A | Z

T|W

TELEPHONE | Our switchboard is fully automated. It allows you to contact the hotel services and the outside without the intervention of our operator. If you wish to contact another room, please dial "1" followed by the room number. If you wish to make an outside call, please dial "0" followed by the number. In case of doubt, please consult the information guide that is next to the phone.

TELEVISION | Cable television.

TOILETRIES | In addition to those available in the room, you can ask Reception for the oral hygiene and the shaving kit.

TRANSPORT | Taxi service available. The Hotel's private shuttle with chauffeur is available upon booking and at least 24 hours in advance. Enquire at Reception please.

TRAVEL AGENCIES | For trips, excursions and airplane tickets, please contact Reception.

WAKE UP CALL | To get this service, make your request at Reception please.



RESTAURANTS / BARS / ROOM SERVICE

“O JARDIM” RESTAURANT

Situated on the ground floor, with panoramic views over the garden and the sea:

Buffet breakfast: 7:00 a.m. – 10:30 a.m.

Lunch: 12:30 p.m. – 2:30 p.m.

Dinner: 7:30 p.m. – 10:30 p.m.

In the summer months (July and August), the “O Jardim” Restaurant is closed at lunchtime.

In its place, the “Coffee Shop” Restaurant, situated in level -1, is open from 1:00 p.m. to 3:00 p.m.

COFFEE SHOP

Situated in level -1. Open in the summer months (July and August) from 1:00 p.m. to 6:00 p.m.

For reservations and information, please dial “550” or “9”.

ROOM SERVICE

Service provided 24 hours. Menu at your disposal in the room. To contact please dial “3”.



SPA & WELLNESS CENTER

The Spa & Wellness Center is situated on level -1 and is open from 9:00 a.m. to 9:30 p.m., closing between 1:30 p.m. and 4:00 p.m. The gym and indoor pool is open from 7:00 a.m. to 9:30 p.m.

THE SPA & WELLNESS CENTER OFFERS

- Indoor and outdoor pools with heated seawater (seasonal at the outdoor pool).
- An outdoor pool for children.
- 2 tennis courts.
- A multifunction court.
- Gym equipped with cardio fitness machines.
- Turf field for football practice (60m x 30m).
- Beach volleyball field.
- Ice cabin (one for men and one for women).
- Sauna (one for men and one for women).
- Turkish bath (one for men and one for women).
- Shower sensations (one for men and one for women).
- *Laconium* (one for men and one for women).
- Massage (by appointment).
- Face and body beauty treatment (by appointment).
- Physiotherapy (by appointment).
- Holistic therapies (by appointment).
- Jacuzzis and chromotherapy (by appointment).
- Hydrotherapy circuit (pool with directed jets; service available by appointment).
- Floating.
- Vichy shower
- 1 Padel court.

Some of the services above are subject to availability.
SPA reception "552" | Wellness Center reception "569"

RULES FOR USING THE GYM

- Wear clothing and footwear that is appropriate for the gym.
- Children under 12 years old are not allowed in.
- The use of body building machines, cardio fitness and weight lifting is not allowed to those under 16 years old.
- Eating is not allowed inside the gym.



SPA & WELLNESS CENTER

RULES FOR USING THE INDOOR POOL AREA

- Shower before going into the pool.
- Don't jump / dive.
- Wear a cap and slippers.
- Do not run in surrounding areas.
- Do not use balls, inflatable mattresses, flippers or any other object that might disturb the other users, except didactic materials used according to their purpose.
- Team water games are not allowed.
- It is not possible to reserve lounge chairs.
- Children under 12 years old may only enter and stay in the pool when accompanied by an adult.
- Eating / drinking is not allowed in the indoor pool area.
- It's not allowed to use bedrooms slippers.

RULES FOR USING THE OUTDOOR POOL AREA

- Shower before going into the pool.
- Don't jump / dive.
- Do not run in surrounding areas.
- Do not use balls, inflatable mattresses, flippers or any other object that might disturb the other users, except didactic materials used according to their purpose.
- Team water games are not allowed.
- It is not possible to reserve lounge chairs.
- Children under 12 years old may only enter and stay in the pool when accompanied by an adult.

RULES FOR USING THE CHILDREN'S ROOM

- If you wish to use the space, you should ask the Spa & Wellness Center Reception.
- Only guests and SPA & Wellness Center members are allowed.
- The room is not supervised, except in July and August.
- Children can only stay in the room when accompanied by an adult.
- The material is for exclusive use inside the room.
- Any damage to material / equipment that occurs beyond its normal wear and tear is the responsibility of the user.
- The room must be tidied after use, ready for other clients.



CONFERENCE ROOMS

The Hotel Solverde Spa & Wellness Center has 17 conference rooms (19 m² to 400 m²) located on the ground floor and 1st floor, all with natural light and air conditioning.

GROUND FLOOR

Nova Iorque | 225m²

Amsterdão | 28m²

Copenhaga | 30m²

Costa Verde | 400m²

Foyer | 259m²

Porto | 93m²

Mónaco | 19m²

Roma 1 | 30m²

Roma 2 | 30m²

Roma 3 | 30m²

Roma 4 | 30m²

Roma 1-2 | 60m²

Roma 1-2-3 | 90m²

Roma 1-2-3-4 | 120m²

Congress Center

Costa Verde + Foyer + Mónaco + Amsterdão + Copenhaga | 736m²

1ST FLOOR

Paris | 96m²

Londres | 53m²

Porto 1 | 45m²

Porto 2 | 45m²

Porto 3 | 45m²

Porto 1-2 | 90m²

Porto 1-2-3 | 136m²

Porto 4 | 72m²

Audiovisual equipment is available on request.
For more information, please dial "4 / 7 or 9".



SOLVERDE

CASINOS · HOTÉIS

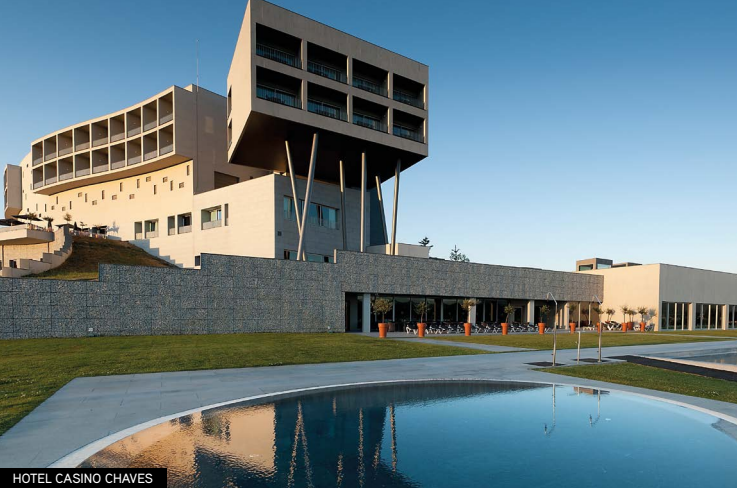


SUGGESTIONS

Allow us to suggest some options for your leisure time:

- Casino Espinho: traditional games, slot machines, restaurant with entertainment on Fridays and Saturdays, bar.
- Unsupervised beach at a distance of 100 m. Supervised beach at a distance of 2 km to the south.
- Oporto Golf Club 5 km to the south – 18 holes.
Special prices for our clients. Please request your voucher at Reception.
- Miramar Golf Club 8 km to the north – 9 holes.
Special prices for our clients. Please request your voucher at Reception.
- Equestrian Centre of Espinho – 5 km to the south.
- Aero Club – 5 km to the south.
- Espinho Indoor Karting – 4 km to the south.
- Surfing, bodyboarding and water sports schools.
- Porto wine cellars.
Visit the cellars of Vila Nova de Gaia and taste the famous Porto wine.
- Cruises on the Douro River.
Reception has several programmes for you to choose from.
- Paiva walkways - 68 Km east.
- Direct access to the Espinho-Vila Nova de Gaia maritim walkway (15 Km).

Note: Ask Reception for our shuttle schedule to Casino Espinho and to Porto (service available by booking).



HOTEL CASINO CHAVES



HOTEL SOLVERDE SPA & WELLNESS CENTER



HOTEL ALGARVE CASINO



CASINO ESPINHO



CASINO MONTE GORDO

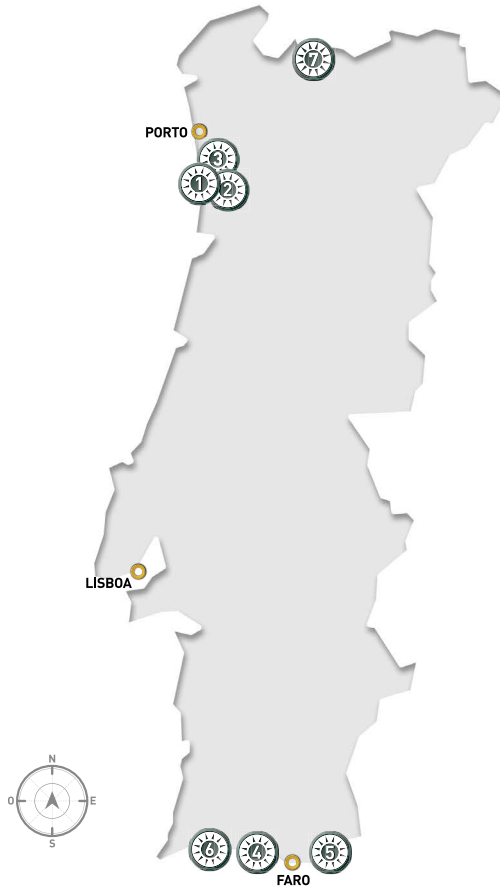


HOTEL APARTAMENTO SOLVERDE



CASINO VILAMOURA

SOLVERDE GROUP



-
- 1 **CASINO ESPINHO**
+351 227 335 500
casinoespinho@solverde.pt
 - 2 **HOTEL APARTAMENTO SOLVERDE** ****
+351 227 338 000
hotelapartamento@solverde.pt
 - 3 **HOTEL SOLVERDE SPA & WELLNESS CENTER** *****
+351 227 338 030
hotelsolverde@solverde.pt
 - 4 **CASINO VILAMOURA**
+351 289 310 000
depcomer.cvm@solverde.pt
 - 5 **CASINO MONTE GORDO**
+351 281 530 800
depcomer.cvm@solverde.pt
 - 6 **HOTEL ALGARVE CASINO** *****
+351 282 402 000
hotelalgarve@solverde.pt
 - 7 **HOTEL CASINO CHAVES** ****
+351 276 309 600
hotelcasinochaves@solverde.pt
-

gruposolverde.pt