



# INDEX

GENERAL DESCRIPTION

A - Z SERVICES

CASINO

PORTIMÃO / PRAIA DA ROCHA  
INTERESTING SPOTS

SOLVERDE GROUP UNITS



05 06 12  
13 14 17

## GENERAL DESCRIPTION

Located in Praia da Rocha, with a privileged view of the Atlantic Ocean, the Hotel Algarve Casino is the ideal scenery for holidays that combine comfort and refinement, leisure and business. Near major tourist facilities - golf courses, marinas, museums and water parks, has its own casino and is located only a few meters from numerous bars, restaurants, nightclubs and local fun spots. Here, a dynamic and cosmopolitan experience awaits you.

### LOCATION

Avenida Tomás Cabreira – Praia da Rocha  
 8500-802 Portimão  
 Tel: +351 282 402 000 | Fax: +351 282 402 099  
 E-mail: [hotelalgarve@solverde.pt](mailto:hotelalgarve@solverde.pt) | Site: [www.solverde.pt](http://www.solverde.pt)  
 GPS: 37°07'05.69" N | 8°32'03.26" W

### FEATURES

- 5 Stars
- 6 Floors
- 3 Elevators
- 192 Bedrooms (143 with balcony and sea view) and 16 Suites (11 with balcony and sea view)
- Casino
- 2 Bars
- 4 Restaurants
- 8 Meeting Rooms
- Garage and Car Parking
- Adults Pool with heated seawater (from the 1<sup>st</sup> of March to the 31<sup>st</sup> of October)
- Children Pool with seawater
- Children's Playground
- Stationery Shop
- Hairdressing Salon
- Mini-bar
- Hair Dryer
- Direct- Dial Telephone
- Cable TV
- Wi-Fi and Cyber Point
- Fax, copier & scan
- Foreign Currency Exchange
- Valet Parking Service
- Babby Sitting Service
- Air Conditioner
- 220 V Electrical Current
- Garden Area
- Health Club (Gym, turkish bath, Sauna, Jacuzzi and Massage Room)
- Room Service 24 hours/day

We expect that this document will help you to learn more about our unity. Please keep it in good condition. The following guests will thank you.

## A | Z SERVICES

If you need to contact Reception, dial "11". For Room Service dial "10".

## A | B

**AIR CONDITIONING** | Main building: the remote control is placed on the wall; Terrace: the remote control is portable.

**ARRIVALS** | From 02h00pm.

**BABY-SITTING** | Upon previous booking at the Reception. This service is charged directly by the baby-sitter.

**BATH AMENITIES** | In addition to those available in the room, you can request a teeth kit and shaving kit, in the Reception.

**BEACH** | There's a direct access to the beach through the stairs located in between the swimming pools. You may rent sunbeds and sun hats at our Beach Service. Our beach staff is at your service. From April to September, from 07h00am to 08h00pm. From October to March, from 08h00am to 06h00pm.

**BEACH SERVICE** | From June to September, from 09h00am to 07h00pm. You may rent sunbeds and sun hats (at an additional cost). Our beach staff is at your service. The towels handed in the pool may be used in the beach concession space, free of charge.

**BED SHEETS AND TOWELS** | Changed daily. If you need additional changes, please contact the Reception.

**BREAKFAST** | Buffet, served in floor -1, at Amendoeiras Restaurant, daily from 07h30am to 10h00am. Continental Breakfast, served in the room until 11h00pm, free of charge. To order, use the form available in the room, placing it outside the door or contact Room Service.



## A | Z SERVICES

If you need to contact Reception, dial "11". For Room Service dial "10".

## C | D

**CAR PARKING** | We offer free car park 200m from the hotel, covered and guarded 24 hours a day. We also have a private garage with limited number of places in -1 floor, with direct access to the interior of the Hotel (ask the Reception for garage rental). Valet Parking Service upon availability.

**CAR RENTAL** | Service available upon booking. We have special conditions at Europcar. For information and reservations contact the Reception.

**COMPLAINTS BOOK** | Available in the Hotel Reception.

**CONFERENCE / MEETING ROOMS** | Hotel Algarve Casino has several rooms with natural light, air conditioning and wireless Internet. Rooms, audiovisual and material rentals are available upon quotation.

**ALADINO SALON** | 210 m<sup>2</sup>; **AL-GHARB ROOM** | 60 m<sup>2</sup>; **ALHAMBRA ROOM** | 150 m<sup>2</sup>; **ALVOR 1 ROOM** | 55 m<sup>2</sup>; **ALVOR 2 ROOM** | 40 m<sup>2</sup>; **ARADE ROOM** | 21.5 m<sup>2</sup>; **ATLÂNTICO ROOM** | 190 m<sup>2</sup>; **ATLÂNTICO + AL-GHARB ROOMS** | 305 m<sup>2</sup>; **BRIDGE ROOM** | 47.2 m<sup>2</sup>; **MIRAMAR ROOM** | 17 m<sup>2</sup>

**CONFORT AMENITIES** | In addition to the shoe shine kit and sewing kit available in the room, you may request replacement in the Reception.

**CRADLES** | Free service, requested at the Reception.

**CREDIT CARDS** | We accept: *American Express, Visa, MasterCard* and *Dinner's Club*.

**CURRENCY EXCHANGE** | Only available for guests, 24 hours a day. Refer to the Reception for available currencies and exchange rates.

**CYBER POINT** | Computer room with internet access. Passwords available at the Reception (at an additional cost).

**DEPARTURE** | The room must be vacated at the latest by midday (conditions for late departures to be confirmed in the Reception). If you leave before 07h30am, you can order Continental Breakfast through room service, free of charge.

## A | Z SERVICES

If you need to contact Reception, dial "11". For Room Service dial "10".

## E|F|G|H

**ELECTRIC CURRENT** | 220V. Electrical power sockets in the bathroom only allow the use of electric shavers.

**ENTERTAINMENT** | Variety of National and International Shows in the Aladino Salon at the Casino (according to schedule - annual). Pianist in the Hotel's lobby (according to schedule - annual). Musical Entertainment in the Hotel's lobby (according to schedule - seasonal).

**EXTRA BEDS** | Service available upon reservation (conditioned to the type of room).

**FAX / PHOTOCOPIES** | Service available 24 hours a day in the Reception (additional cost).

**FIRE** | In case of fire, please follow the instructions posted on the door and warn immediately the Reception or the telephonist.

**FLOWERS** | Order in the Reception.

**FULL BOARD** | Upon reservation. You may change your Accommodation and Breakfast option to Half-Board or Full Board even after arrival.

**GAMING ROOM** | At the Casino. Minimum age is 18 years old. Variety of table games in a room disposed on 2 floors connected by escalators and equipped with 358 latest generation slot machines. Friday, Saturday and holidays eve from 04h00pm to 04h00am. Sunday from 03h00pm to 03h00am. From Monday to Thursday from 07h00pm to 03h00am.

**GOLF** | Region Golf Courses details at the Reception, Special conditions offered to our guests. Golf Packages: Accommodation, golf reservation and car rental.

**HALF-BOARD** | Upon reservation. You may change your Accommodation and Breakfast option to Half-Board or Full Board, even after the arrival.

**HAIRDRESSER** | Service available upon reservation (except Sundays and Holidays).

**HEALTH CLUB** | Floor -1. Free gym. Sauna, Turkish bath and Jacuzzi, from 09h00am to 07h00pm. Massage service upon reservation, from 10h00am to 07h00pm, from Monday to Saturday. Price list in the room. For more information dial 241.

## A | Z SERVICES

If you need to contact Reception, dial "11". For Room Service dial "10".

## I|L|M|N|O

**INTERNET** | Wireless system throughout the hotel (free of charge) and Cyber Point (additional cost).

**IRONING SERVICE** | To know all conditions refer to the form available in the room (to be completed in order to request the service). Express service is also available upon payment of an additional fee. Deliver your clothes to the room maid or contact the Reception.

**LAUNDRY** | Use the existing form in your room and deliver the clothes to the room's maid. The costs of normal and urgent service are listed on the form. The laundry service is external, so delivery time requires confirmation. For more information contact the Reception.

**LOST AND FOUND** | Please contact the Reception.

**LUGGAGE** | Luggage Carrier service available. The luggage will be transported and, if you wish, stored in a proper place.

**MASSAGE** | Available in the Health Club, floor -1, or in the bedroom. Price list available in the room. For bookings, please contact Reception or the Health Club (dial 241).

**MESSAGES** | Please address the Reception.

**MINI-BAR** | Available in all rooms. Price list and list of drinks available in the room. The stock is daily checked and replenished. We ask that you inform the Reception, on departure day, if anything from the mini-bar was used in the last night of stay.

**NEWSPAPERS / MAGAZINES** | National and international, for sale in our Stationery Shop. Level 0.

**OFFICE AMENITIES** | In addition to those available in the room (pen, pad, paper, envelopes, post cards, etc.) you may require larger amounts in the Reception.



## A | Z SERVICES

If you need to contact Reception, dial "11". For Room Service dial "10".

## P|R

**PAYMENTS** | We accept credit cards, checks, traveller's checks, cash and bank transfers (previously confirmed). Direct payments should be made on arrival.

**PETS** | Dogs are allowed up to 15 kg, only in the rooms and at an additional cost. Their presence in public areas is strictly forbidden (regulation provided in the Reception).

**PHARMACY** | Contact the Reception to find out the nearest pharmacy and get information about on-duty pharmacies.

**PHYSICIAN** | If medical care is necessary in the hotel, please contact the Reception. The service is charged by the physician directly. All information is also provided if you wish to see a doctor outside the Hotel.

**PICNIC** | You can replace the Half-Board meal at the Hotel for a picnic. Please contact Room Service.

**POOLS** | Floor -2, in the exterior. For adults, with heated seawater (from the 1<sup>st</sup> of March to the 31<sup>st</sup> of October). For children, with seawater. Opening Hours: May to October from 09h00am to 07h00pm. From November to April from 09h00am to 06h00pm. Towels, sunbeds and sun hats, free of charge at the pools.

**POST OFFICE** | You can send and receive your correspondence through the Reception.

**RECEPTION** | Floor 0. Open 24 hours a day.

**RELIGIOUS SERVICES** | Information on locals and schedules available in the Reception.

**RESERVATIONS** | Service available 24 hours a day. Please contact the Reception.

**ROOM CLEANING** | Made between 09h00am and 05h30pm. If you wish, you may determine the cleaning time, please inform the Reception. Place the card "Do not disturb" on the outer of the door if you don't want to be disturbed.

**ROOM SERVICE** | Available 24 hours a day. The Room Service letter is available in the bedroom and contains detailed information about special services, such as menus for children. Dial 10.



## A | Z SERVICES

If you need to contact Reception, dial "11". For Room Service dial "10".

## S|T|W

**SAFE DEPOSIT BOXES AND VALUES** | We provide to our guests, free of charge, individual safe deposit boxes in the room. We also offer free values deposit service in a central deposit box at the Reception.

**SERVICE DIRECTOR** | A member of the Hotel Board is at your disposal.

**SPORTING AND LEISURE ACTIVITIES** | There is a whole range of activities you can perform during your stay: Windsurfing, Water skiing, Jet Skiing, horse, boat, jeep, motorcycle, bicycle and pedestrian riding, fishing, diving, etc. Close to the Hotel there are numerous water and leisure parks. For information, reservations and transportation, please contact the Reception.

**STATIONERY SHOP** | Floor 0. National and international Newspapers and Magazines. Tobacco, books, chocolates, picture postcards and souvenirs. From Monday to Thursday, from 09h00am to 07h00pm. Friday and Saturday from 09h00am to 03h45pm. Sunday from 09h00am to 02h45pm.

**TAXIS** | Request the service in the Reception.

**TELEPHONE** | In order to ensure speed, our call centre allows you to contact our services, other rooms, or numbers outside of the Hotel, directly. The cost of national and international calls is automatically registered and debited to the client account. For more detailed information see the existing brochure in the room.

**TELEVISION** | All rooms are equipped with TV, remote control, cable channels and channel list.

**TOURS AND TOURIST ITINERARIES** | If you want to know better Algarve, do national or international tours, or participate in any other recreational activity, there are numerous suggestions we have for you. Our receptionists will be happy to give you all information and make the respective bookings.

**TRANSFER** | External service available upon previous booking. Direct payment to the driver or to the hotel.

**TRANSPORTATION** | Get all the information about the types of transport and schedules in the Reception.

**TV AND READING ROOM** | Floor 0.

**WAKE UP SERVICE** | Requested at the Reception.

## BARS &amp; RESTAURANTS

**BAR SUNSET**

Floor 0, in the hotel. Comfortable environment and magnificent terrace overlooking the pool, the beautiful Praia da Rocha and the Atlantic Ocean. Here you can watch the most stunning sunset. From 10h00am to 01h00am.

**BAR PANORAMA**

Floor 0, at the Casino. Excellent terrace overlooking Praia da Rocha. Friday, Saturday and holidays eve from 04h00pm to 04h00am. Sunday from 03h00pm to 03h00am. From Monday to Thursday from 07h00pm to 03h00am.

**RESTAURANT ALADINO**

Floor - 1, at the Casino. With background music, band or show (by schedule). Guests on half-board basis can dine at the Restaurant Aladino without any supplement. From 07h30pm to 01h00am (except special events or show change).

**RESTAURANT AMENDOEIRAS**

Floor -1 at the Hotel. Wonderful views of the pool, garden and beach. Portuguese specialties and international cuisine. In mid and low season the Hotel reserves the right to offer, at dinner time, the Restaurant Aladino. Breakfast Buffet from 07h30am to 10h00am. Dinner from 07h30pm to 10h00pm.

**RESTAURANT ROCHEDO**

On the beach, for snacks and light meals. Open only during peak season. From 10h00am to 06h00pm.

**RESTAURANT ZODÍACO**

Floor -2 at the Hotel, by the pool, outdoors. A la carte service, drinks and snacks. It also provides a service around the pool. From 12h00 to 04h30pm.



## CASINO

Hotel Algarve is complemented by the brightness of its casino, with nightlife, fantastic international shows, musical evenings, restaurants, bars and modern game rooms.

Located in the building next to the hotel, level 0 and -1, has direct access through a corridor located at Floor 0.

**Gaming Room:** Minimum age is 18 years old. Free entrance.

**Banca Francesa (Portuguese Dice Game)** – 1 table

**American Roulette** – 3 tables

**Black Jack** – 2 tables

**Caribbean Stud Poker** – 1 table

**Texas Hold'em Poker** – 3 tables

**Show:** Floor -1 at 10h30pm (subject to availability).

Friday, Saturday and holidays eve from 04h00pm to 04h00am. Sunday from 03h00pm to 03h00am. Monday to Thursday from 07h00pm to 03h00am.

**AUTÓDROMO / KARTÓDROMO INTERNACIONAL DO ALGARVE**

Designed to be one of the best and most modern circuits in Europe, Autódromo Internacional do Algarve has maximum security conditions. The natural form of the land brought a single circuit with steep slopes that make driving a pleasure, since the curves and straights follow each other at a breakneck pace, and always with marked pending. These trace features allow the public a spectacular view, offering a broad and comprehensive visibility from any countertop. The Karting track is also a prime location for tests with artificially wet areas. It is undoubtedly a space for leisure and entertainment for fans, businesses, families and children, who will find here a place of great fun.

**CASA MUSEU MANUEL TEIXEIRA GOMES**

This space exposes the bibliographic collection of the writer and statesman Manuel Teixeira Gomes. Periodically various events take place such as concerts, recitals, gatherings, conferences and workshops.

**PORTIMÃO HISTORICAL CENTRE**

From medieval Portimão there are only a few rags of the city walls hidden by the houses. It is the architecture of the end of the 19th century and early 20th century that marks the profile of the historic centre, the two-storey houses, wrought iron balconies, ennobled masonry on the windows and doors, fronts with stone and ceramics bannisters, walls covered in tiles. The Town Hall occupies the former Palácio dos Viscondes de Bívar (XVIII century), a building with noble and classic lines.

**JESUITS COLLEGE**

The widest church of Algarve, features austere and majestic lines. The school was built by Diogo Gonçalves, a nobleman that enriched in the Orient, which has a polychrome marble tomb inside the church. Built from 1660 to 1707, was widely repaired after 1755.

**SANTA CATARINA DE RIBAMAR FORTRESS**

Integrated, along with the fort of São João de Arade in Ferragudo, the defenses of Portimão and its port against the corsairs and pirate attacks. Construction of the XVII / XVIII Centuries with excellent strategic position. Privileged viewpoint of the sea, river, beaches and cliffs, an excuse to enjoy the late afternoon sunset. Inside, there's an old chapel dedicated to Santa Catarina de Alexandria.

**NOSSA SENHORA DA CONCEIÇÃO CHURCH**

Building from the 15th Century. Reconstructed in the XVIII century and remodelled in the XIX century. In the original building remains a beautiful Gothic portal, with decorated capitals, a gargoyle and buttresses. Interior with three naves. On the high altar, valuable golden altarpiece, with baroque decoration. Among the images, there is a St. Peter the Apostle (XVI century) and four ivory and rosewood crucifixes. Manueline style holy water fonts (XVI century). Sillar wall with tiles from various sources (XVII century).

**PORTIMÃO MUSEUM**

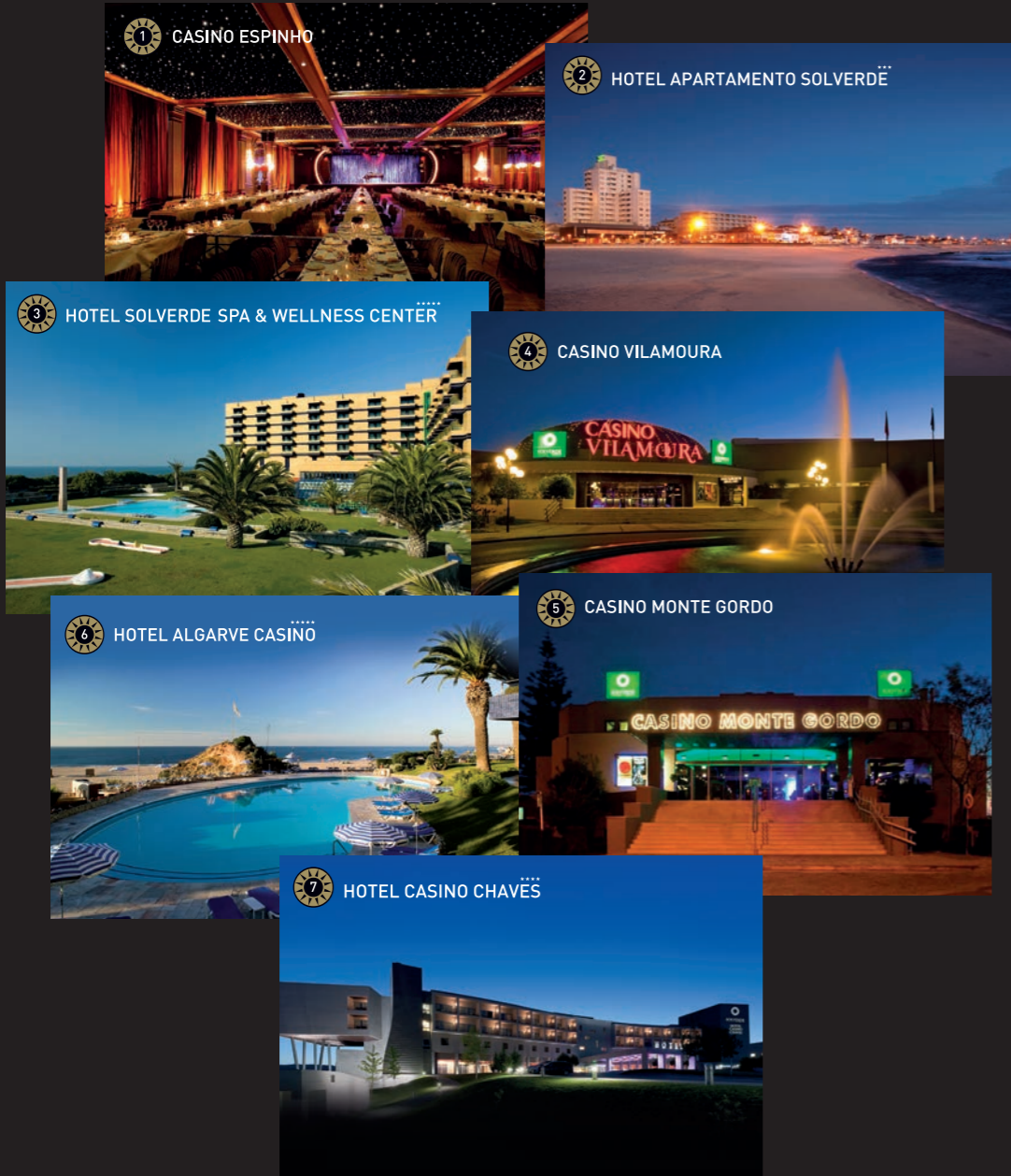
Is housed in the former canning factory Feu and opened to the public in May 2008. The collection of the Museum consists of industrial and ethnographic heritage, particularly the canning industry, shipbuilding, fishing, stowage, lithography, casting, metalwork, smokehouse items, transports among others. It also displays archaeological evidence from various terrestrial and aquatic archaeological sites. In 2011 won the first edition of DASA - Labour World Award 2011, awarded in Dortmund, distinguished as the best museum related to work.

**QUINTA PEDAGÓGICA DE PORTIMÃO**

Occupying an area of 2 hectares, divided into distinct zones of cultivation, animal shelter, a lake area, green and leisure areas, Quinta Pedagógica de Portimão recreates a rural farmhouse where parents and children can learn together about the rustic life outside urban centres.

# SOLVERDE GROUP UNITS

www.solveverde.pt



**CASINO ESPINHO**  
 tel: +351 227 335 500  
 email: casinoespinho@solveverde.pt

**HOTEL APARTAMENTO SOLVERDE**  
 tel: +351 227 338 000  
 email: hotelapartamento@solveverde.pt

**HOTEL SOLVERDE SPA & WELLNESS CENTER**  
 tel: +351 227 338 030  
 email: hotelsolverde@solveverde.pt

**CASINO VILAMOURA**  
 tel: +351 289 310 000  
 email: casinovilamoura@solveverde.pt

**CASINO MONTE GORDO**  
 tel: +351 281 530 800  
 email: casinomontegordo@solveverde.pt

**HOTEL ALGARVE CASINO**  
 tel: +351 282 402 000  
 email: hotelalgarve@solveverde.pt

**HOTEL CASINO CHAVÈS**  
 tel: +351 276 309 600  
 email: hotelcasinochaves@solveverde.pt

